



HHSC: Early Childhood Intervention Advisory Committee August 26, 2021



The Early Childhood Intervention Advisory Committee, which is required by Part C of the Individuals with Disabilities Education Act, advises the Texas Health and Human Services Commission Division for Early Childhood Intervention Services on development and implementation of policies that constitute the statewide ECI system. The governor appoints the committee members.

The federal law establishing the system of early intervention programs for infants and toddlers with developmental delays or disabilities is Part C of the Individuals with Disabilities Education Act. In Texas, the Part C program is Early Childhood Intervention. ECI is a division of the Texas Health and Human Services Commission.

Each state that operates a Part C program must include as a part of its program an advisory council. Part C of the IDEA calls that council the Interagency Coordinating Council. The HHSC/ECI ICC is the ECI Advisory Committee. The function of the Advisory Committee is to advise and assist HHSC/ECI in its operation of the statewide system of providing ECI services to eligible children and families in Texas. The multidisciplinary and multi-constituency representation on the Advisory Committee contributes to making it an important part of the ECI system. It is ECI's major source of stakeholder input.

Members:

Pattie Rosenlund, Program Director, Chair

Program Representative
Mission

Barbara Knighton, Chair-Elect

Parent Representative
Spring

Ryan David Van Ramshorst, M.D.

HHSC Medicaid/CHIP Representative
San Antonio

Christina Renee Sherrod, M.D.

Physician Representative
Southlake

Terrie Breeden

Texas Education Agency Representative
Austin

Patricia Kay Reedy

Parent
Texarkana

Diana Ruiz, D.N.P.

Personnel Preparation Representative
Odessa

Elizabeth (Betsy) Barry Zulfer

Parent Representative
Round Rock

Sarah Abrahams

Department of Family Protective Services
(DFPS) Representative
Austin

Hannah Holmes English

Parent Representative
Houston

Cynthia (Cal) Azenneth Lopez

Texas Education for Homeless Children and
Youth (TEHCY) Representative
Austin

Cynthia (Cindy) Dawn Lee

Public Provider Representative
Wylie

Guillermo Lopez

Program Representative
Austin



Stephanie Shine, Ph.D.

Head Start Representative
Lubbock

Catherine Carlton

Program Representative
Arlington

Lizzeth Saldana

Parent Representative
San Antonio

Melissa Griffiths

Parent Representative
Trophy Club

Jeremy Triplett

Department of State Health Services (DSHS)
Representative
Austin

Chasey Reed-Boston, Ph.D.

Program Representative
Texas City

Laura Warren

Advocate Representative
Blanco

Kristina Borenstein Otterstrom

Parent Representative
Houston

Rachel Cerkovnik Bowden

Texas Department of Insurance (TDI)
Representative
Austin

Allison Pearce Wilson

Texas Workforce Commission Representative
Austin

Stephanie Klick

State Legislative Representative
Fort Worth

Call to order. The meeting was convened by . Chasey Reed-Boston, Ph.D. A quorum was present.

Consideration of April 7, 2021, meeting minutes. The minutes were approved as written.

ECI program

ECI state office staff updates-- Kristina (Krissy) Perez is the new ECI project manager. • Cecilia Berrios, ECI policy and support manager, is retiring on August 31.

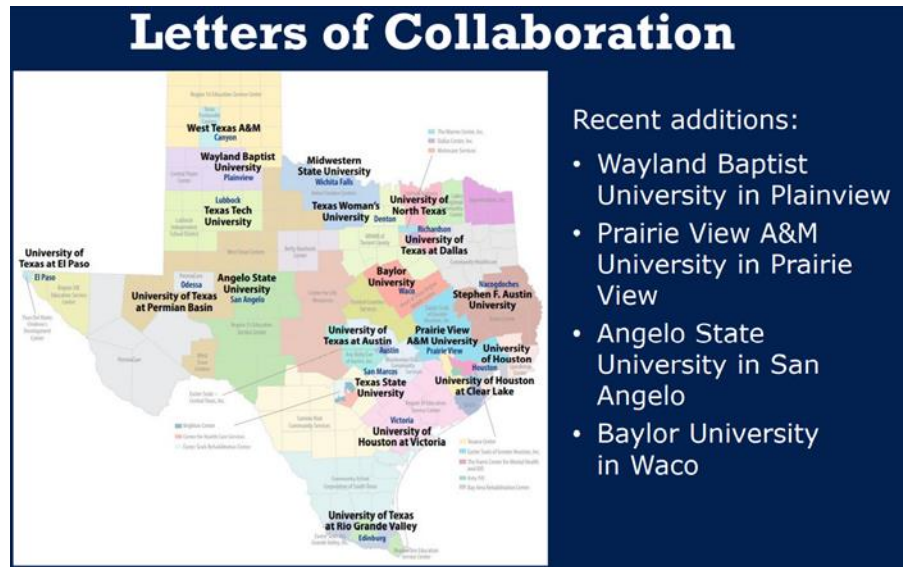
Quarterly data
Children Referred and Served

	SFY 2019	SFY 2020	SFY 2021 Q1	SFY 2021 Q2	SFY 2021 Q3
Average Monthly Referrals	7,350	6,604	6,892	6,445	7,971
Average Monthly Unduplicated Eligibility Determination	4,334	3,746	3,713	3,536	4,220
Average Monthly Enrolled	28,687	28,519	26,912	27,030	28,292
Average Monthly Comprehensive Served	31,433	31,285	29,593	29,570	30,867
Cumulative Quarterly/Average Annual Total Clients Served (unduplicated)	60,596	59,234	34,937	42,531	51,563

Delivered Services and Evaluations

	SFY 2019	SFY 2020	SFY 2021 Q1	SFY 2021 Q2	SFY 2021 Q3
Average Monthly Delivered Service Hours (not parent-arranged)	85,979	74,845	70,566	64,766	75,800
Average Service Hours Per Child Per Month	2.73	2.39	2.38	2.19	2.46
Average Monthly Service Coordination (SC)/Targeted Case Management (TCM) Hours	12,891	11,358	6,154	4,937	6,062
Average Monthly SC/TCM Hours Per Child Per Month	0.66	0.63	0.54	0.52	0.54
Average Monthly Initial Comprehensive Evaluations	4,149	3,607	4,681	3,377	4,031

Training and outreach



- ECI Advisory Committee Orientation training released.
- Developmental Assessment of Young Children 2nd Edition (DAY-C 2) training.
- Improving Equity and Family Outcomes technical assistance project supported by the Early Childhood Technical Assistance Center (ECTA) and the Center for IDEA Early Childhood Data Systems (DaSy).
 - FY2021 Family Outcomes Survey webinar
 - New infographic titled, ECI Wants to Hear From Families

Recent virtual conferences:

- Texas Speech-Language and Hearing Association
- Mental Health Symposium for Deaf and Deafblind Youth
- Texas Medical Association
- School for the Deaf Virtual Family Retreat
- Texas Autism Conference
- Texas Parent to Parent Conference
- Texas System of Care and Community Resource Collaboration Group Conference

Upcoming virtual conferences:

- Division for Early Childhood's 37th Annual Conference being held September 21-24, 2021

Outreach

Revised Parent Handbook rollout.

- Child find forums completed in June.
- Participation in the national Inclusion Community of Practice (COP) to provide a presentation about the collaboration between ECI and the childcare system in Texas.
- Provided support to the Early Childhood Inter-agency team on development of a website for parents to access information about programs and services in Texas.

ECI Wants to Hear from Families

Texas Health and Human Services Early Childhood Intervention



Why does ECI need to hear from families?

Every year Texas Health and Human Services Early Childhood Intervention (ECI) asks our families to tell us how we are doing.

Hearing from families shows us where we need to make changes to better serve them.



What do we want?

ECI wants all families to:

1. Know their rights and their child's rights while enrolled in ECI.
2. Learn how to communicate their child's needs and family priorities.
3. Discover ways to help their child learn and grow every day.

Last year, the percent of families who said ECI helped them:



Why do we need your help?

ECI's number one goal is to provide the best services we can to our enrolled families.

We need your help to reach that goal.

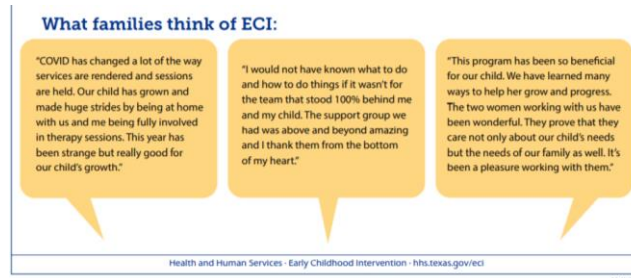


How can you help?

Please fill out our short survey and tell us what we are doing well and how we can improve to better serve your family.

If you have any questions or need assistance, please call 512-776-4300 for help.





State Systemic Improvement Plan

- Feedback from OSEP on SSIP Phase III – Year 5 report coming soon.
- Foundational and master coaching training with the developers of the evidence-based practice continues.
- Early brain development trainings-of-trainers successfully completed two cohort trainings this month. To date, four trainings total have been completed.

SSIP Stakeholder Input

Goals:

- Review the State-Identified Measurable Result
- Evaluate targets
- Recommend changes

Communication methods:

- Emails
- Meetings
- Focus groups
- Surveys

Rules update-- Proposed amendments were posted for informal stakeholder review and comments from May 3 - June 1, 2021. [Texas Administrative Code \(state.tx.us\)](https://www.texas.gov/legislation/texas-administrative-code). Public hearings will take place this fall, one of which is scheduled for the next ECI Advisory Committee meeting on November 3, 2021. Proposed amendments will be posted in the Texas Register for formal public comment from November 5 - December 6, 2021.

Office of Special Education Programs Leadership Conference: [2021 Leadership and Project Directors' Conference | OSEP Ideas That Work](#)

Individuals with Disabilities Education Act (IDEA) Part C grant award and federal determination

- Texas meets federal requirements.
- Texas was awarded \$45,758,612 in Part C funding for federal fiscal year 2021 (Down slightly from \$45,957,813 in federal fiscal year 2020).
- Texas received \$19,807,340 in American Rescue Plan Act funds.

Federal Fiscal Year (FFY) 2021 Supplemental Nutrition Assistance Program Education (SNAP-Ed)

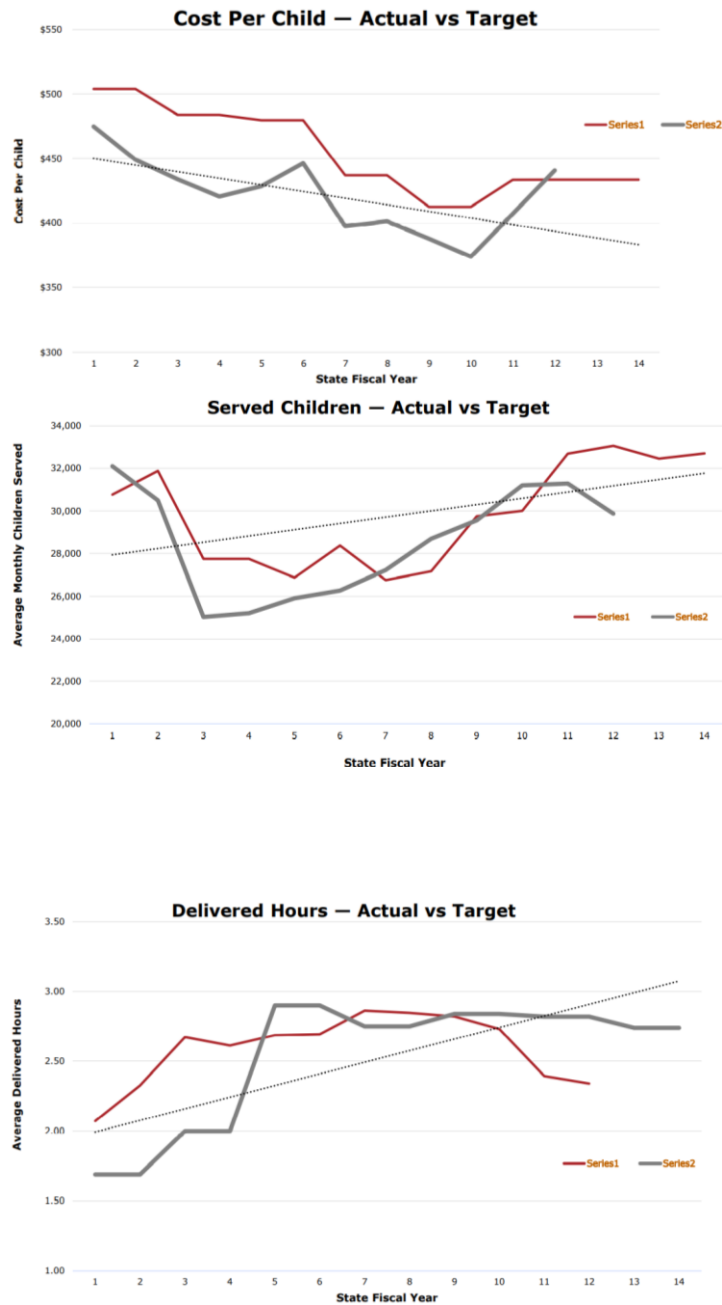
- Nine participating ECI providers during the last year.
- Accomplishments during this time include:
 - Participating programs provided nutrition education via telehealth and virtual or in-person group services to more than 1,000 individuals.
 - Submitted updated project description, budget and subcontractor budgets for FY2022 SNAP-Ed funds.

Legislative update

Appropriations and Performance Measures-- Early Childhood Intervention (ECI) received essentially level funding for the 2022-2023 biennium. Total funding for ECI services in Fiscal Year (FY) 2022 is \$168.9 million and for FY 2023 is \$170.1 million. This appropriation is based on the following projections:

- Average monthly cost per child of \$433.61 in FY 2022 and \$433.61 in FY 2023.
- Average of 32,456 children per month served in comprehensive services in FY 2022 and 32,699 in FY 2023.
- Average of 2.74 hours of service per month delivered per child.

Appropriations and Performance Measures — Historical Comparisons, Cost Per Child



Significant Legislation

- HB 4 allows Medicaid and the Children's Health Insurance Program (CHIP) recipients to receive targeted case management and physical therapy via telehealth and requires reimbursement.

- SB 40 allows speech-language pathology assistants and interns to provide telehealth services and allows supervision and observation via telehealth.

Office of Special Education Programs Monitoring Report Corrective Action Plan update

ECI Service Area Coverage

- Updated contractor transition checklists.
- Included new language in the ECI contracts

Record Maintenance

- Developed desk review tool on record quality for fiscal year 2022 quality assurance reviews.
- Added procedures for records review during contractor transitions.

Child Find--- Child find self-assessment work continues. Collaborating with the BUILD Initiative on next steps.

- June child find forums complete. Planning for the next set of forums in January 2022.
- Detailed referral data shared with contractors. Working to solidify metrics to determine which contractors will need to address low spots to come more into line with statewide referral performance.
- Collaborating with the Office of Disability Prevention for Children on public awareness and education campaign

Sustainability and Geographic Location

- Personnel retention grant activities underway.
- Rule amendments to credentialing requirements incorporated into the rules project.
- Recommendations made to Medicaid for telehealth flexibilities to continue.
- Electronic signature technology solutions maintained.
- DAY-C 2 is an approved eligibility determination tool for Texas ECI.

Questions/Answers/Comments

There was no discussion

Child find self-assessment. *Please follow the link for more detail on the Child Find assessment*

Child find is a continuous process of public awareness activities, screening, and evaluation designed to locate, identify, and evaluate children with disabilities who are in need of Early Childhood Intervention (ECI). Child Find is federally required. The tool was developed by the:

- Office of Special Education Programs,
- Individuals with Disabilities Education Act Early Childhood Data Systems,
- Early Childhood Technical Assistance Center.

And is designed to help states identify effective strategies and promote efficiency in their Part C child find systems. It is intended to be voluntary to support states in their child find efforts.

Child Find focuses on:

- Children referred but found ineligible for early intervention services.
- Children referred within six months of their third birthday.
- Identification of infants and toddlers who are underserved by Part C.

Project Goals:

- Identify best practices that are already in place within ECI programs to address child find requirements.
- Discover gaps in our child find efforts.
- Develop a plan of action to duplicate best practices and address gaps or areas of improvement on a statewide basis.

Next Steps:

- Develop a workgroup comprised of ECI contractors, stakeholders, interagency partners, and families to review a summary of the findings from the surveys and focus groups.
- Develop an improvement plan with actions that will strengthen our child find efforts and increase equity across the state.
- Implement and monitor progress of the improvement plan.

Questions/Answers/Comments

No substantive comments were offered.

[Office of Disability Prevention for Children overview and media campaign](#)

- Follow the link for more specific information

ODPC strives to:

- Prevent developmental disabilities, including those that manifest in utero and during birth, in children ages 0-12.
- Minimize the losses caused by preventable disabilities.
- Coordinate a unified, comprehensive prevention effort in Texas.

ODPC's duties include:

- Educating the public.
- Promoting sound public policy.
- Identifying, collecting and disseminating information and data.
- Collaborating with healthcare providers, stakeholders and other state agencies.

Areas of Focus

- Prevention of disabilities caused by maternal health issues during pregnancy.
- Prevention of injuries in children.
- Early identification and diagnosis of disabilities to ensure early intervention and services.
- Address co-occurring intellectual and developmental disabilities (IDD) and mental health (MH) conditions.

Pediatric Acute Onset Neuropsychiatric Syndrome (PANS).

PANS is a clinical condition defined by the sudden "encephalitic-like" onset of obsessive-compulsive symptoms and/or severe eating restrictions and at least two concurrent cognitive, behavioral or neurological symptoms. Through education and community collaboration efforts, ODPC is committed to promoting:

- early identification and diagnosis; and
- mental health wellness in children diagnosed with PANS

Ongoing Initiatives

- Social media and website presence

- Public awareness efforts
- Speaking engagements
- Developing partnerships within and outside of HHSC
- Support and promote existing prevention efforts
- Councils, workgroups and stakeholder meetings

Questions/Answers/Comments

Is there a projected date for PANS webinar... Friday October the 8th.

Member reports, Local program activities, Parent activities, Inter/intra-agency partners' activities

- Staffing continues to be a problem across the nation. 78% of providers are understaffed.
- Pilot program in north Texas using navigators to help with screening and referral
- SNAP outreach has been referral through virtual networks
- In-home face to face phase in is occurring
- Parents felt the need to transition to live in-person services
- DFPS stated that the partners in prevention conference November 2-4 (check out agency website)
- DFPS Grants through community organizations , new grant award for Nurse Family Partnerships
- DFPS Family Resource Centers for children 0-5. Five have been developed
- TDI--- Mental health parity rule has been adopted
- TDI HB 3459 addressed pre-authorization and rules are being developed. It is more than just ECI
- TDI HB2090 created an *all-payer* claims data base and rules are being developed
- Special Education—contracts for child find are being developed
- ECI-Special education—two guides: Early Transition in Texas and a guide for parents (Texastransitions.org)

- TEA—a conference on head start was held
- M and CH inundated with resources for COVID 19
- Medicaid and CHIP Services has been heavily focused on COVID 19 and the Delta Variant ensuring programs continue
- Medicaid and CHIP February 1, Autism Services benefit will have begun. They are actively monitoring provider enrollment with the MCOs
- TWC Infant and Toddler Learning Network for specialist to provide support to entities through the Children's Learning Institute is operational ([Children's Learning Institute | Children's Learning Institute \(childrenslearninginstitute.org\)](https://childrenslearninginstitute.org)) ([Infant-Toddler Specialist Network | Children's Learning Institute \(childrenslearninginstitute.org\)](https://childrenslearninginstitute.org))
- Texas Parent to Parent has been developing parent groups during COVID and there will be a south Texas virtual conference.

Public comment. No public comment was provided

Planning for next meeting.

- November 3rd, 1:00 pm.
- Updated Rules
- Meeting is in the middle of partners in prevention conference referenced above

Adjourn. There being no further business, the meeting was adjourned.

The information contained in this publication is the property of Texas Insight and is considered confidential and may contain proprietary information. It is meant solely for the intended recipient. Access to this published information by anyone else is unauthorized unless Texas Insight grants permission. If you are not the intended recipient, any disclosure, copying, distribution or any action taken or omitted in reliance on this is prohibited. The views expressed in this publication are, unless otherwise stated, those of the author and not those of Texas Insight or its management
